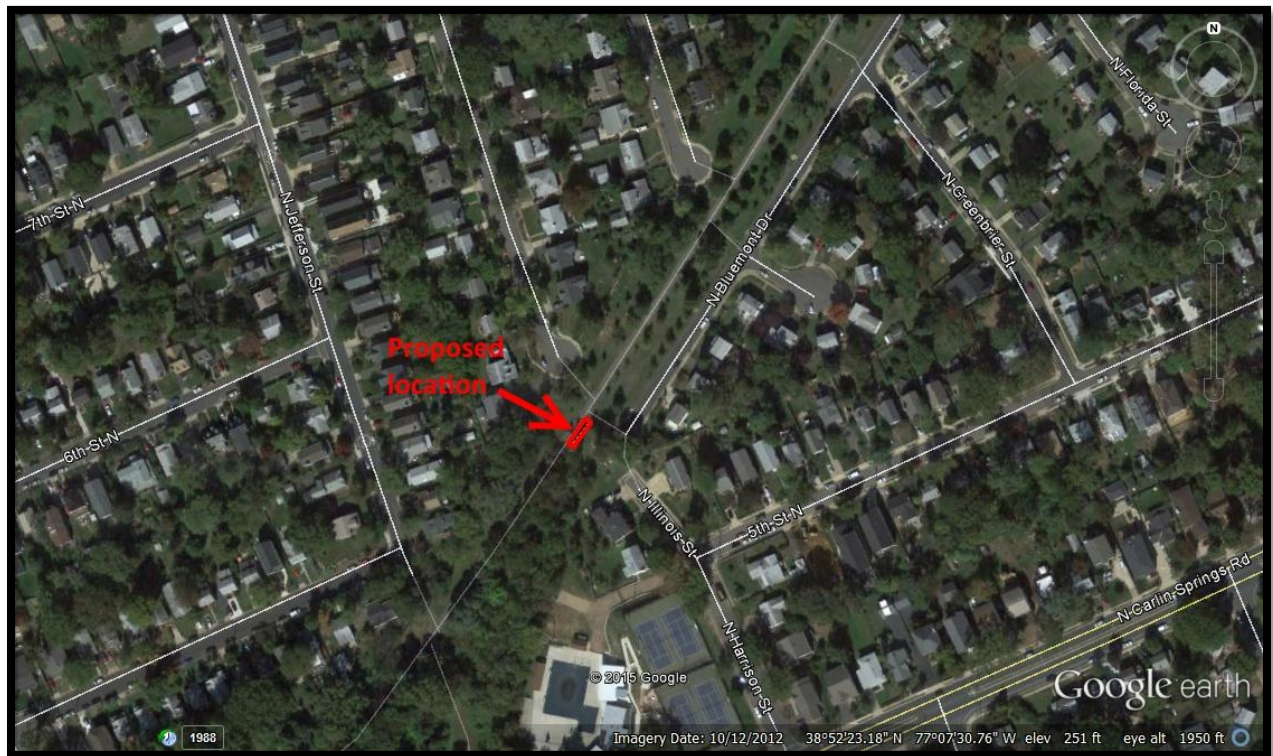


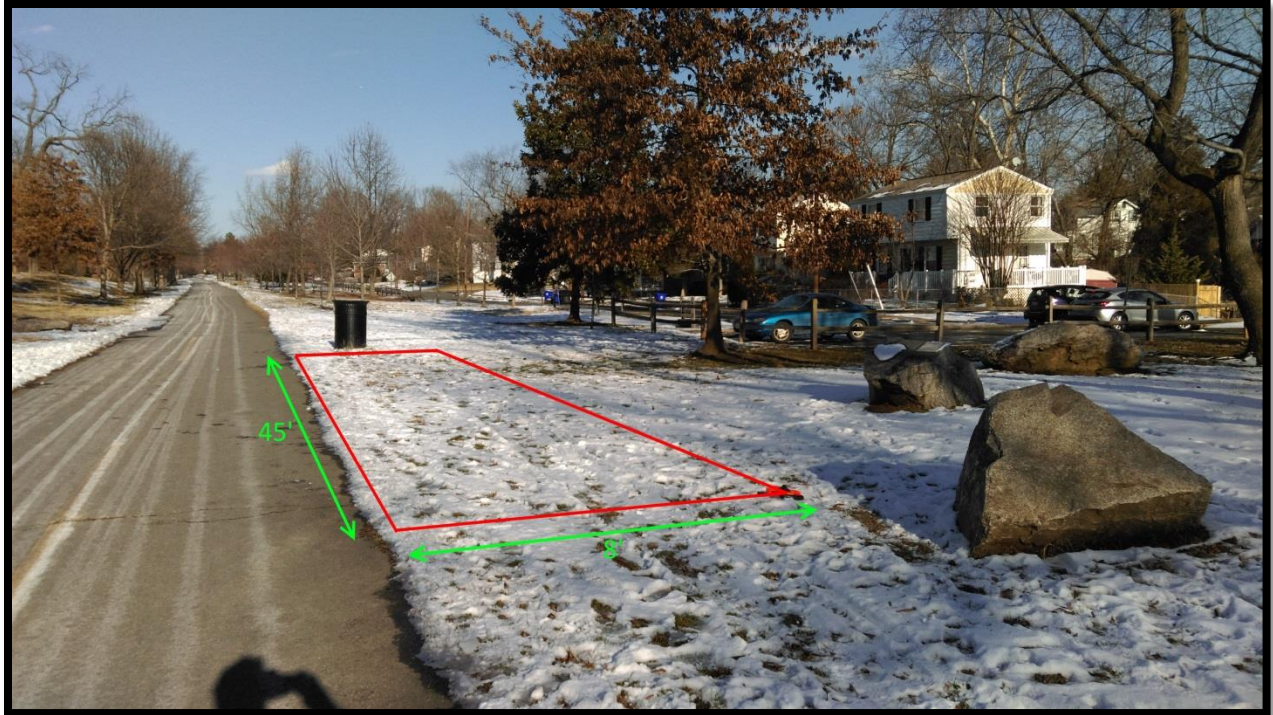
February 11, 2015

Jon Lau, President
Bluemont Civic Association
P.O. Box 5134
Arlington, VA 22205

Dear Mr. Lau:

Arlington County is proposing a Capital Bikeshare station along the Bluemont Junction Trail near the ends of Illinois Street. This station would be placed just off the trail and next to the walkways that connect the trail to the ends of the street. The location is about a half-mile from the nearest station, which is also located along the trail, near the intersection of George Mason and Wilson. Below are aerial and ground-level photos of the site. The ground-level photo is looking to the northeast.





Capital Bikeshare is self-service bike transit, perfect for short trips, with over 2,900 bikes available at nearly 350 stations in Arlington, D.C., Alexandria, and Montgomery County. Arlington currently has about 79 stations and plans to expand throughout the County. A map of Arlington's existing and proposed stations can be found online at <http://bit.ly/1pbOIza>.

Capital Bikeshare is a service provided by Arlington County, District of Columbia, City of Alexandria, and Montgomery County in regional cooperation. The service has been successful, with more than nine million trips since its launch in September 2010, thanks to the ease of use in checking out and returning bikes and inexpensive membership and usage fees for our customers. Membership options include \$75/year, \$25/month, \$15/3-day, and \$7/1-day, with the first 30 minutes of every trip for free and additional fees thereafter. The year and month membership options are purchased online or by phone while the 3-day and 1-day memberships are purchased with a credit card at any Capital Bikeshare station.

Capital Bikeshare offers many benefits to folks who live, work, and shop in your neighborhood. With stations every couple of blocks in Arlington, we provide a dense network for Arlingtonians and visitors to get where they're going in an expeditious and affordable way without needing to drive a car or find a parking space. With 25,000+ annual members in the region, more and more Arlingtonians and Washingtonians are taking advantage of the service and choosing to get around by bike.

Each Capital Bikeshare station consists of a variable number of docks and bikes, a terminal for registration by new customers, and a map providing nearby stations for trip planning. The station is fully solar-powered, so no construction is necessary to electrify the station. In fact, installation takes only about one hour. If the area is presently grass, as in this case, then we must also install

a concrete pad on which the station will sit. The bikes are 3-speed, have front and rear lights, chainguard and fenders, and the frame is step-thru to allow folks of most heights to use them.

The County reviews each station location to ensure that it meets a list of criteria including sufficient sidewalk pedestrian clearance (6' minimum and greater in designated locations), keeps proper sight distance for street users, is at least 15' from a fire hydrant, etc.

We would be happy to present this proposed Capital Bikeshare station location to your community at your next civic meeting. Should you have any questions about this station or the service in general, I may be reached at 202.909-6902 or jason@metrobike.net. More information about the system in general is available at CapitalBikeshare.com.

Best,

Jason Hardin
Capital Bikeshare Planner
consultant to Arlington County Commuter Services
Department of Environmental Services
Arlington County, VA
202-909-6902
jason@metrobike.net
CapitalBikeshare.com