

750 NORTH GLEBE ROAD

Preconstruction Community Meeting
February 16, 2017

Saul Centers
A Real Estate Investment Trust



DAVID M. SCHWARZ ARCHITECTS



CLARK
CONSTRUCTION

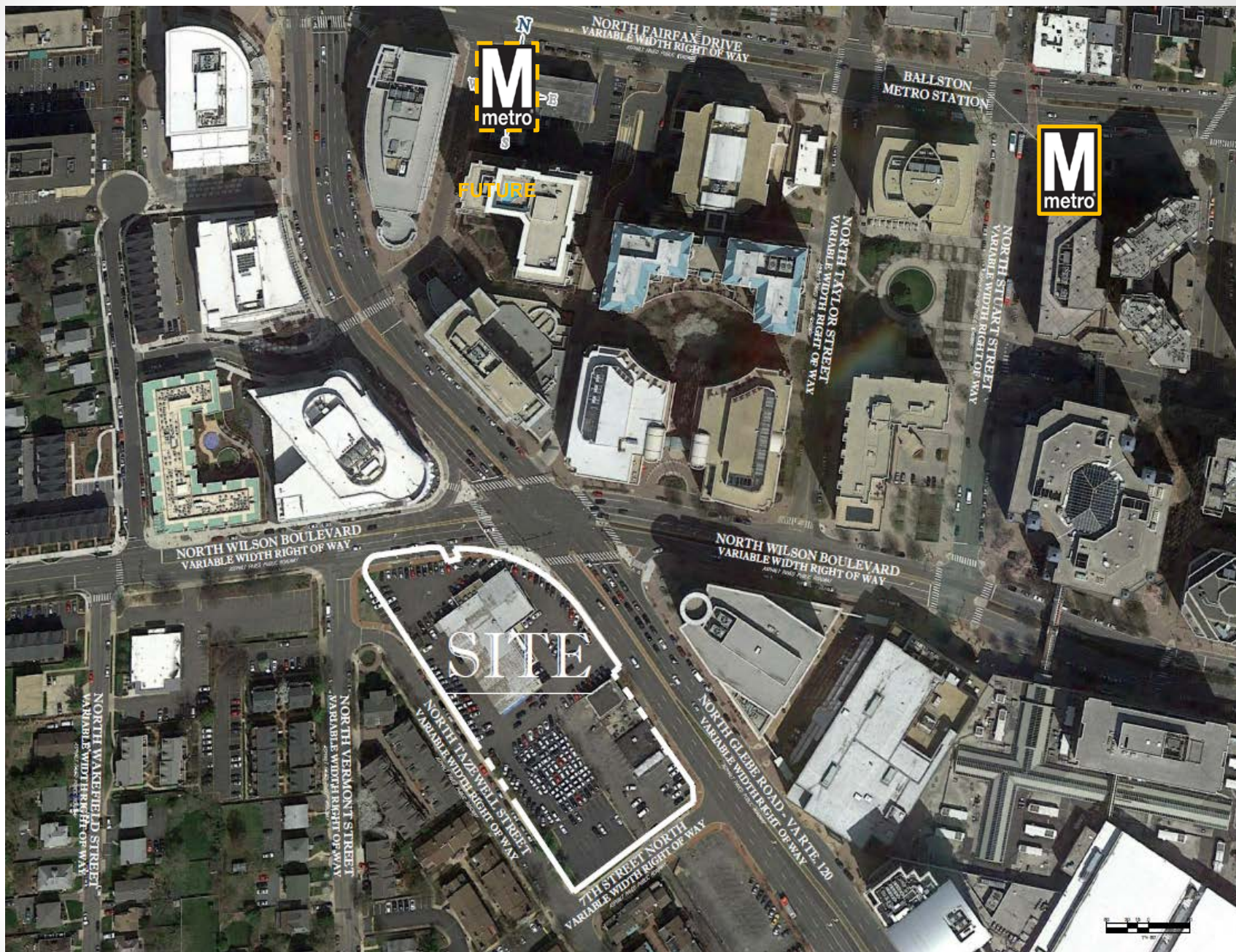
Introductions and Key Personnel

- **Community Liaisons:**

- Andrew Clarke, Saul Centers
- Adrian Mirani, Clark Construction

- **Other Key Personnel:**

- Mary Beth Avedesian, Saul Centers
- Don Hachey, Saul Centers
- Bill Bartling, Clark Construction



Site Context



Aerial Rendering

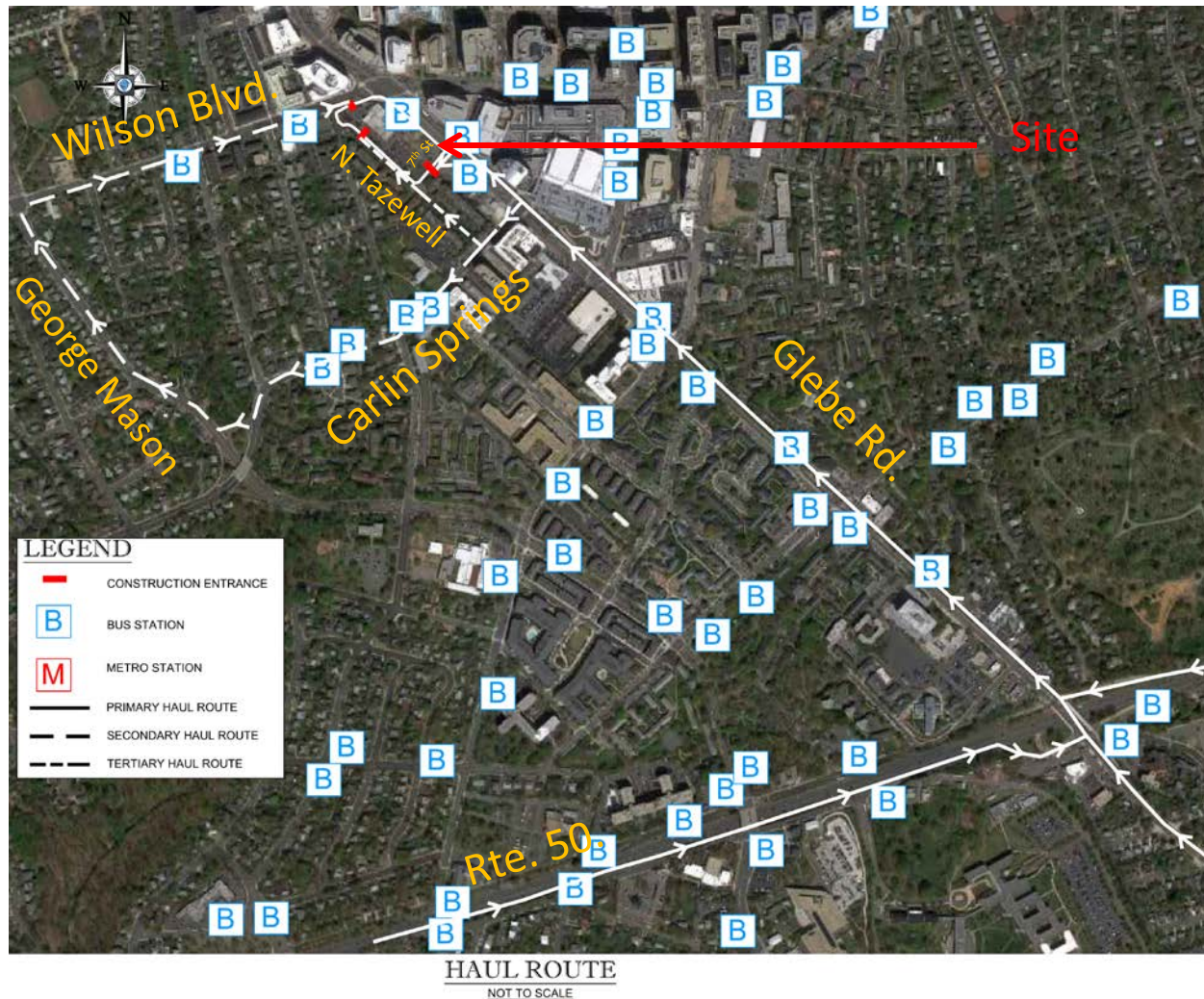
Announcement – ACFD Training

- Updated Training Dates: 2/18/17 - 2/26/17
- Contact ACFD Training Academy Manager with questions:
Nick Salameh, Captain II
703-228-4627
nsalam@arlingtonva.us

Construction Schedule

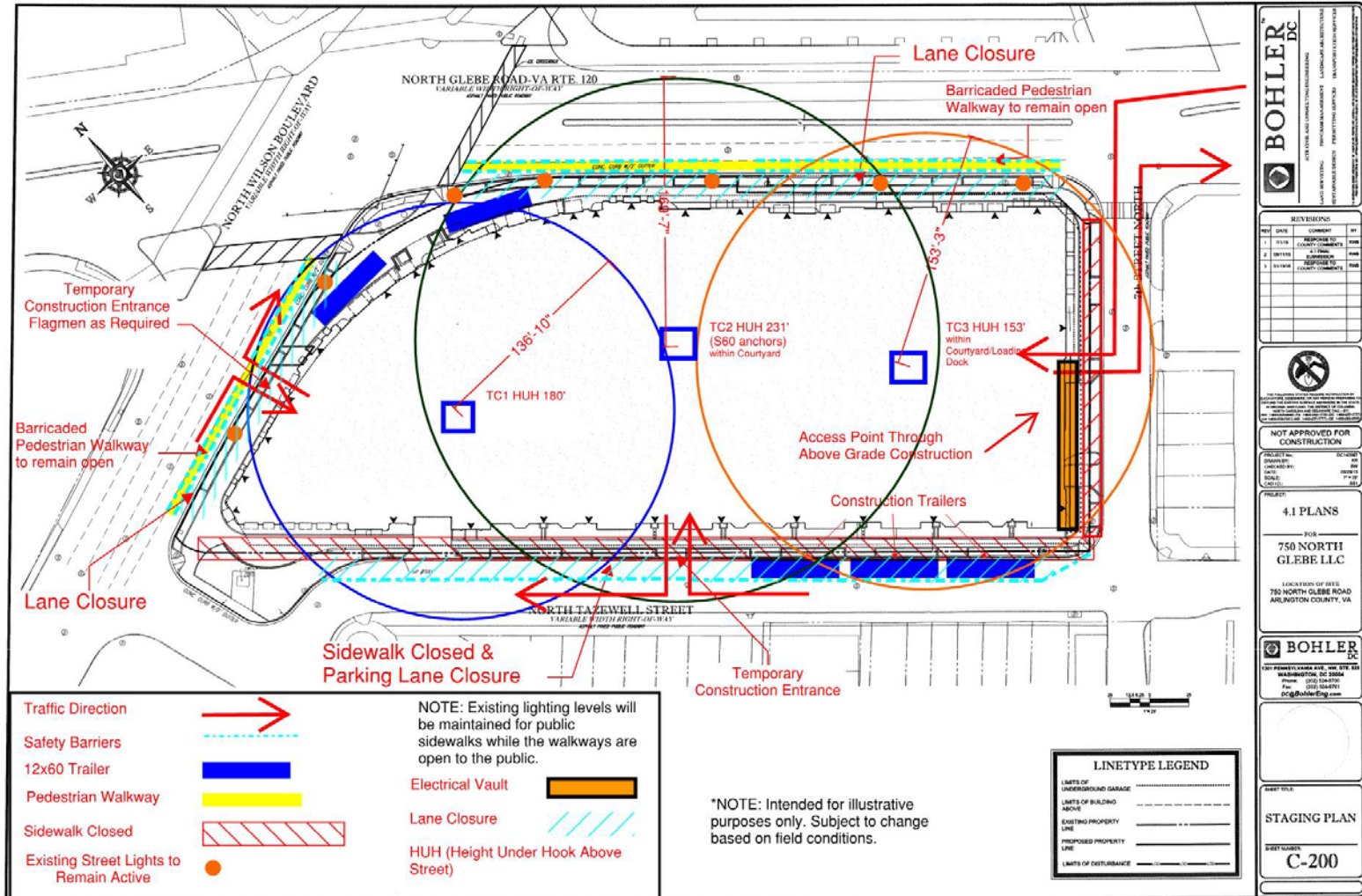
Activity Name	Start	Finish	2017			2018				2019				2020	
			Q2	Q3	Q4	Q1	Q2	Q3	Q4	Q1	Q2	Q3	Q4	Q1	Q2
SUMMARY	27-Feb-17 A	12-Feb-20													
DEMOLITION	27-Feb-17 A	29-Mar-17													
MOBILIZATION/STREET UTILITIES	14-Apr-17	02-Jun-17													
EXCAVATION	26-May-17	14-Nov-17													
BUILDING CONSTRUCTION	25-Oct-17	12-Feb-20													
SIDEWALK & LANDSCAPING	01-Aug-19	23-Dec-19													
SUBSTANTIAL COMPLETION		12-Feb-20													

Construction Haul Routes



750 North Glebe

Site Logistics



750 North Glebe

Site Logistics

- **Construction Worker Parking**
 - Parking arrangement with Ballston Commons Garage
- **Work Hours**
 - 7:00 AM – 9:00 PM (Monday – Friday)
 - 9:00 AM – 9:00 PM (Weekends and Holidays)

Questions?

